

How Do You Know Something Is a Sculpture?

PART 2 – Now let's learn even more about what a sculpture is. A sculpture can be made out of many different types of materials such as cans, clay, metal, stone, or wood. Look closely at the *Bear and Salmon Conversation* sculpture created by Rick Bartow. What materials do you think this sculpture is made out of?



Write which materials you think the *Bear and Salmon Conversation* sculpture is made out of on a piece of paper or in the space below.

I think the *Bear and Salmon Conversation* sculpture is made out of _____

How Do You Know Something Is a Sculpture?

PART 4 - A sculpture has shapes. Look closely at the *Continuum Basket: Flora* sculpture made out of aluminum cans by Gerald L. Clarke. What shapes do you see?



Share which shapes you see in the sculpture on a piece of paper or in the space below using words, drawings, or both.

Shapes I See

How Do You Know Something Is a Sculpture?

PART 5 – A sculpture tells a story. You can learn about the story a sculpture tells by looking at the sculpture and its title. Look closely at *The Pioneer Woman* sculpture made out of bronze by Bryant Baker. What story does the sculpture tell?



Answer the questions about the story that *The Pioneer Woman* sculpture tells. Write your answers on a piece of paper or in the space below. There are no wrong or right answers.

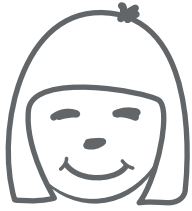
SCULPTURE QUESTIONS	MY ANSWERS
What types of different people do you see?	
What are the people doing?	
What things do you see the people holding?	
Where are the people? Look at the bottom of the sculpture. Are they indoors or outdoors?	
What do you think <i>The Pioneer Woman</i> title means? (Hint: A pioneer means the first person to do something.)	

Write what story you think *The Pioneer Woman* sculpture tells on a piece of paper or in the space below.

I think the sculpture is telling a story about _____

How Do You Know Something Is a Sculpture?

PART 6 – Some sculptures show how a person is feeling to help tell the story of the sculpture. One way to show how a person in a sculpture is feeling is through the face. A smile on a person’s face shows that they are happy. Look at the words for different feelings below. Then draw a person’s face to show that feeling.



Happy

Sad

Tired

Mad

Scared

Sculptures can also show how a person is feeling through the body. Look closely at the *Rattlesnake* sculpture again. This sculpture shows what happens when a cowboy and his horse see a rattlesnake nearby on the ground. Notice what the cowboy and the horse in the sculpture are doing with their bodies. How do you think the cowboy feels when his horse kicks its two front legs into the air?



Do you think the cowboy is feeling happy, sad, tired, mad, or scared? Write how you think the cowboy in the *Rattlesnake* sculpture feels on a piece of paper or in the space below.

I think the cowboy in the sculpture is feeling _____

I think the cowboy is feeling this way because _____

How Do You Know Something Is a Sculpture?

PART 7 – Some sculptures show movement or action to help tell the story of the sculpture. Look closely at the two different sides of the *Devil Duster* sculpture made out of bronze by Mehl Lawson. What is moving in this sculpture? Circle the parts of the *Devil Duster* sculpture that show movement.



Write what parts of the *Devil Duster* sculpture show movement on a piece of paper or in the space below. Then write about what might be happening in the sculpture that is causing the parts to move.

The parts of the sculpture that show movement are _____

I think these parts of the sculpture are moving because _____

How Do You Know Something Is a Sculpture?

PART 8 – Make your own sculpture. With the help of an adult, look for materials in your home or in nature to make a sculpture out of. Plan your sculpture by answering the questions in the chart. Write your answers on a piece of paper or in the space below.

SCULPTURE QUESTIONS	MY PLAN
<p>What material or materials will you use to make your sculpture? <i>Examples: Buttons, Cans, Clay, Crayons/markers, Glue, Paint, Paper, Paper towel rolls, Pencils/pens, Popsicle sticks, Rocks, Sticks, Tape, Other materials</i></p>	
<p>What animals, people, places, plants, and/or things will you include in your sculpture?</p>	
<p>What shapes will you include in your sculpture?</p>	
<p>What story will your sculpture tell? What will your sculpture be about?</p>	
<p>Will your sculpture show feelings or movement? If so, how will you show feelings or movement through your sculpture?</p>	
<p>What will your sculpture look like? Make a sketch (a simple and quick drawing) of what your sculpture will look like. Include a title.</p>	

PART 9 – Create your sculpture using your plan.