

California Gold Rush

In 1848, James Marshall discovered gold at Sutter's Mill in Coloma, California, which is about 140 miles northeast from San Francisco. As the world learned of the discovery, thousands of people traveled to California from Asia, South America, Europe, and across North America to strike it rich. Most miners were unsuccessful, but the gold rush's impact can still be felt today in the violence experienced by California's Native communities and the environment in northern California.



<http://collections.theautry.org/mwebcgi/mweb.exe?request=record;id=M535518;type=103>

Object Name: Map

Maker: J. Disturnell

Title: *Map of California, New Mexico and Adjacent Countries Showing The Gold Regions & c.*

Date: 1849

Object ID: 90.253.284

Notes: Color map of California and New Mexico detailing routes and topographic information.



<http://collections.theautry.org/mwebcgi/mweb.exe?request=record;id=M302266;type=102>

Object Name: Lantern slide

Title: *Crossing the Sierras in '49*

Object ID: LS.7260

Notes: Lantern slides are photographs made on glass and viewed with an early version of a projector.

California Gold Rush



<http://collections.theautry.org/mwebcgi/mweb.exe?request=record;id=M505633;type=101>

Object Name: Scale

Date: 1849–1855

Object ID: 93.21.20

Notes: Portable gold scale, typical of those used during the gold rush. Scales like this were commonly carried by miners.



<http://collections.theautry.org/mwebcgi/mweb.exe?request=record;id=M534658;type=101>

Object Name: Trunk

Date: circa 1849

Object ID: 89.175.1

Notes: Leather-covered wood trunk lined with removable drawer.

California Gold Rush



<http://collections.theautry.org/mwebcgi/mweb.exe?request=record;id=M276103;type=102>

Object Name: Lantern slide

Maker: Unidentified artist

Title: *Sutter's Mill on January 24, 1848*

Date: late 1800s to early 1900s

Object ID: LS.2832

Notes: Lantern slide of a drawing featuring Sutter's Mill in Coloma, California.



<http://collections.theautry.org/mwebcgi/mweb.exe?request=record;id=M276158;type=102>

Object Name: Lantern slide

Maker: E.W. Kain

Title: *Where the Gold Comes From*

Date: late 1800s to early 1900s

Object ID: LS.2845

Notes: Lantern slide of a drawing of gold miners working in northern California.

California Gold Rush



<http://collections.theautry.org/mwebcgi/mweb.exe?request=record;id=M505833;type=105>

Object Name: Lettersheet

Maker: James Mason Hutchings

Title: *The Miner's Ten Commandments*

Date: 1853

Object ID: 89.212.11

Notes: A lettersheet is a piece of paper that can be folded, sealed, and mailed without the need to use an envelope.



<http://collections.theautry.org/mwebcgi/mweb.exe?request=record;id=M549083;type=105>

Object Name: Lettersheet

Maker: Barber & Baker, Publishers

Title: *California Mining Illustrated*

Date: 1855

Object ID: 94.237.15

Notes: On the left side of the page are drawings featuring men digging and using hydraulics to clear out a mine. On the right side of the page are drawings featuring men working along a riverbed.

California Gold Rush



<http://collections.theautry.org/mwebcgi/mweb.exe?request=record;id=M2853;type=102>

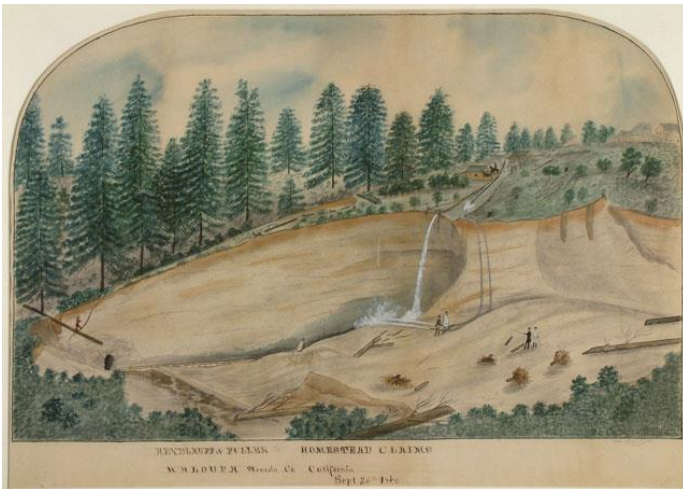
Object Name: Lantern slide

Maker: F.H. Maude

Title: *A Group of Miners with Sluice Box*

Object ID: LS.9444

Note: A sluice is a long narrow box that traps gold as water passes through it.



<http://collections.theautry.org/mwebcgi/mweb.exe?request=record;id=M560587;type=101>

Object Name: Painting

Maker: George Barrington

Title: *Heydluff & Fuller on Homestead Claims, Waloupa Nevada Co. California, Sept. 25th, 1860*

Date: September 25, 1860

Object ID: 87.87.10

Note: Landscape scene of hydraulic gold mining operation. Hydraulic mining used hoses of water to wash away hillsides to find gold.

California Gold Rush



<http://collections.theautry.org/mwebcgi/mweb.exe?request=record;id=M544873;type=101>

Object Name: Compass

Maker: John Roach

Date: 1850s

Object ID: 95.152.1

Notes: A compass made for surveying mine shafts.



<http://collections.theautry.org/mwebcgi/mweb.exe?request=record;id=M535555;type=101>

Object Name: Gold pan

Date: 1880s

Object ID: 85.1.737

Notes: Metal pan used for mining gold.

California Gold Rush



<http://collections.theautry.org/mwebcgi/mweb.exe?request=record;id=M26438;type=101>

Object Name: Drawing

Maker: John Woodhouse Audubon

Title: *Chinese Diggings*

Date: January 20, 1850

Object ID: 22.G.978K

Notes: Pen and ink drawing of a gold miner.



<http://collections.theautry.org/mwebcgi/mweb.exe?request=record;id=M512880;type=101>

Object Name: Painting

Maker: Ernest E. Narjot

Time: *Miners: A Moment at Rest (Gold Rush Camp)*

Date: 1882

Object ID: 97.88.1

Notes: Painting featuring three men and a dog resting around a cabin.